

TECHNICAL TRAINING SPECIALIST

Training Web & Applications Development

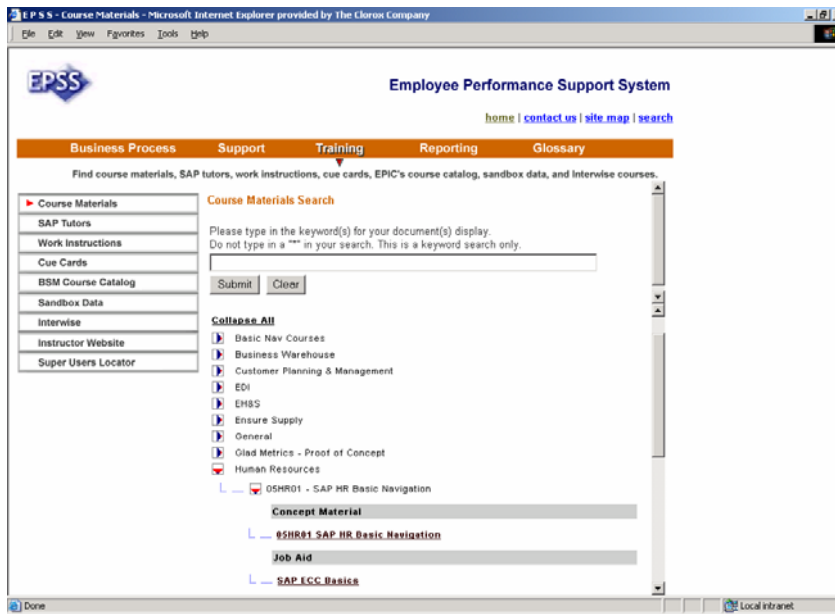
The Employee Performance Support System (EPSS)

The Employee Performance Support System is the Clorox ERP training web site. On average, 1500 end users access EPSS a month. EPSS stores all training materials for SAP, Siebel, BW and Hyperion. EPSS contains courses (PDF format), simulations (Captivate and SAPtutor), job aids, work instructions, process flows and reference documents. EPSS also has 2 tools that assist end users in finding Super Users (to be discussed later) and match legacy part numbers to SAP part numbers.

The content is fed via several active server pages (ASP) and a content management database called Thread Manager. Thread Manager is an SAP project management database that links all deliverables from functional specs through implementation. All business process procedures (BPPs) are converted into training materials. The links to training materials are stored in Thread Manager.

EPSS captures the training links from Thread Manager. Post SAP implementation, EPSS needed a makeover. I successfully re-launched EPSS within a month of my on-boarding at Clorox.

EPSS Screenshot



This is a screenshot of the Training section of EPSS, which is the most commonly used section of the site.

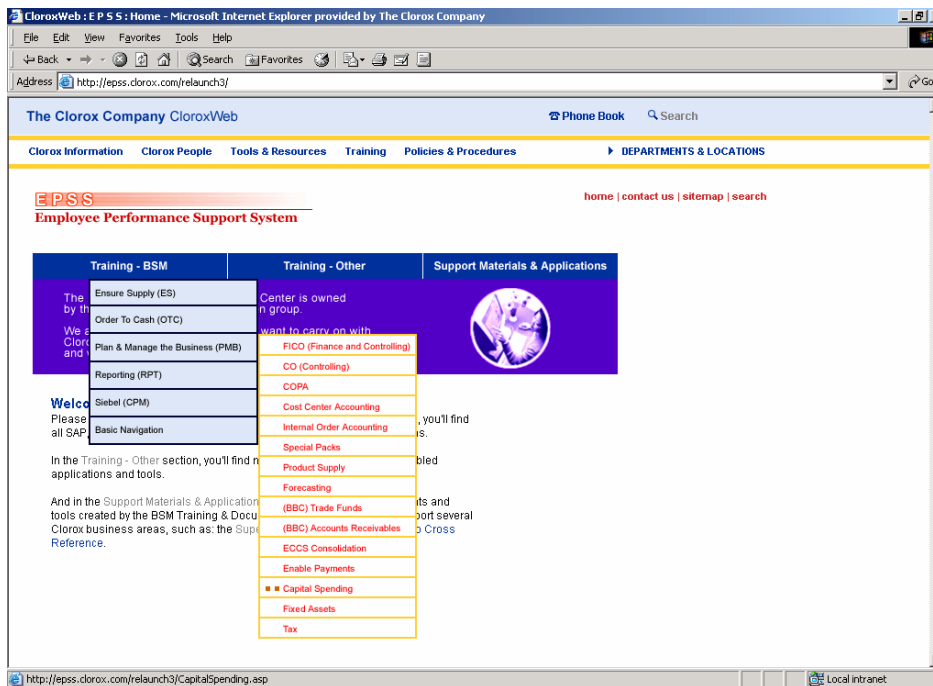
The Employee Performance Support System (EPSS) Redesign

As Clorox continued to customize SAP, SAP business areas began to prioritize processes by functional area. Thus, EPSS needed to be redesigned according to business areas – by function or by mega-process (depending on each business areas organization).

The new redesign incorporates a re-engineering of the backend (Thread Manager) SQL tables. Also, utilizing Macromedia DreamWeaver, the site was created using ASP, JavaScript, and CSS.

Currently, this is in Beta testing and also requires more business input on search engine functionality and user interface design.

EPSS Redesign Screenshot

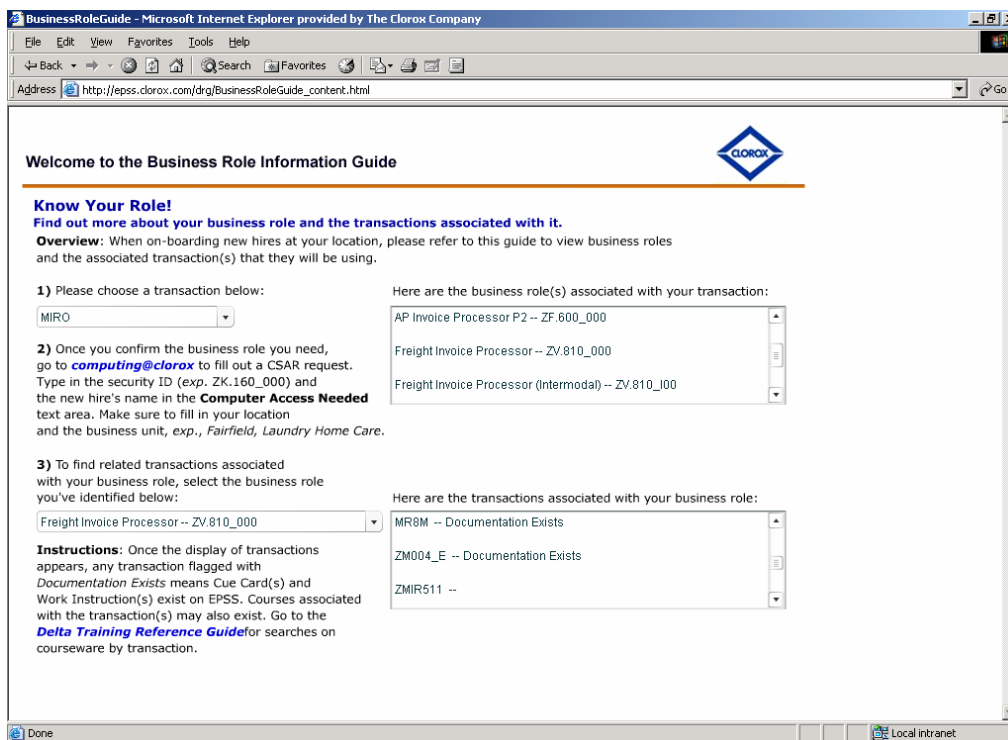


This is a screenshot of the new Beta version of EPSS.

The Business Role Information Guide

The purpose of this application was for end users to identify which transactions were mapped to business roles. From that information, end users would request the correct business role from IS Security and also see what training documentation was applicable to their role. The Business Role Information Guide (BRIG) is a Flash application running off an XML file.

BRIG Screenshot

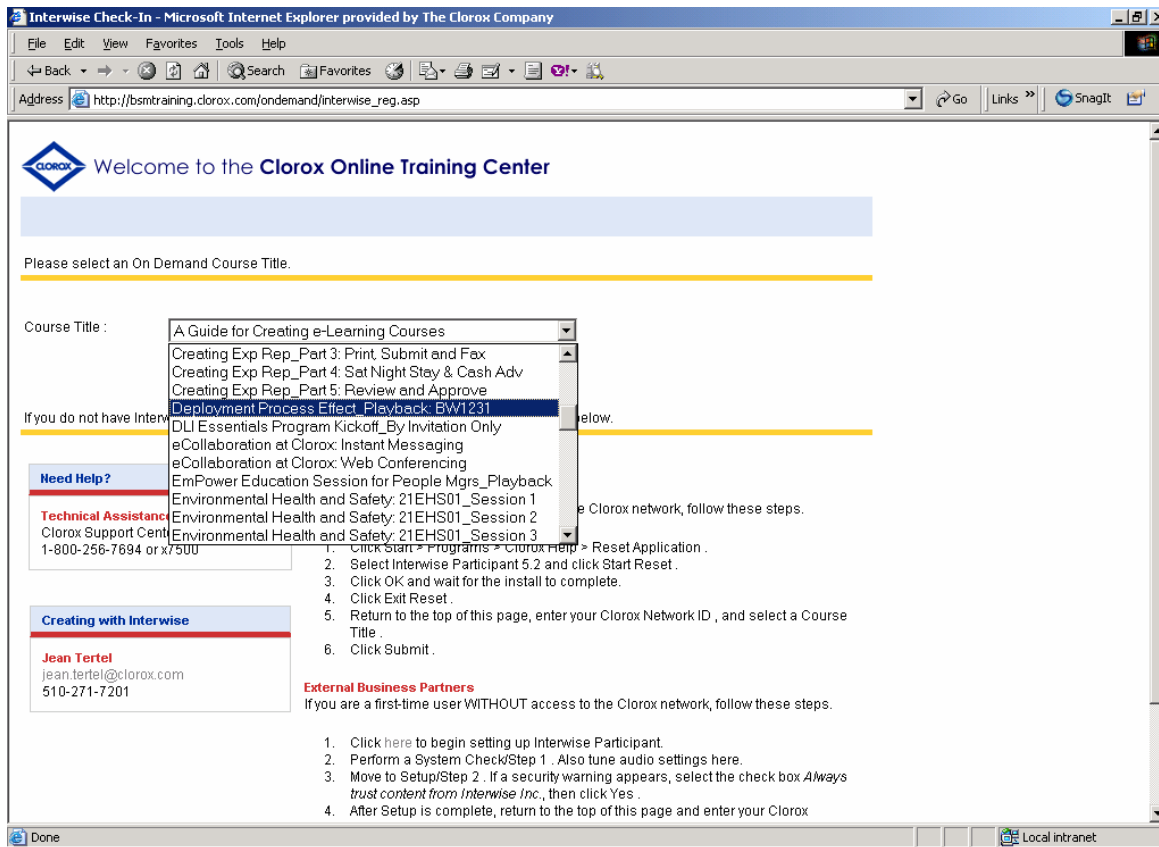


The user chooses the transaction code MIRO (for example) and finds all business roles mapped to it. Once the business role is identified the end user can request security access and any training documentation relevant to that business role.

The Online Training Center

The purpose of this application was to consolidate all of our Interwise On Demand courses and launch them from one web site. Importantly, we needed to see which people were taking courses. In conjunction with the IS Engineering team, we configured the server that would read User Logon IDs from every Clorox laptop. I created an ASP script that would read the Logon ID. When the End User clicked submit, a record would be recorded in the backend that would capture the User ID, course submitted, and a date/time stamp. Since this information was captured on the backend, any reporting tool could be utilized to report out to upper management.

Online Training Center Screenshot

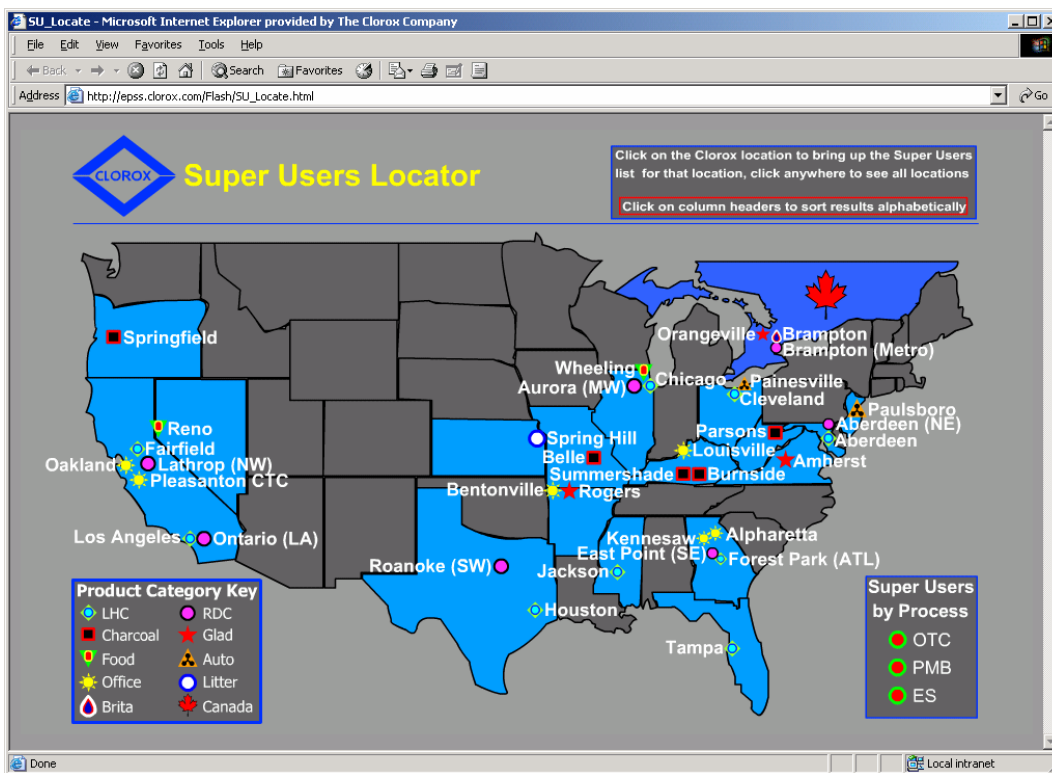


The user selects a course and clicks Submit, and then the course module opens. On the backend, the page registers the User ID which is invisible to the End User. However, the User ID, the course, and a date/time stamp are recorded.

The Super Users Locator

Clorox created the Super Users Network (SUN) to help enable process capability for their end users. The design for this application was to assist end users in finding the Super Users across the country. The Super Users Locator is a Flash application that runs off XML. This was the first interactive map of all U.S. and Canadian Clorox locations/facilities created for Clorox.

Super Users Locator Screenshot



The user clicks on a location and a pop-up of all Super Users for that location (with contact information) appears.